



ALLIANZ INTERSPRAY

60T BOLLARD PULL FIFI 1, DP 1 ANCHOR HANDLING TOWING/SUPPLY VESSEL

GENERAL DATA

Year Built	April 2010
Builder	Berjaya Dockyard Sdn Bhd, Malaysia
Classification	ABS +A1 Towing Vessel, AH, Fire Fighting Class 1, Offshore Support Vessel (E) +AMS, DPS 1
Call Sign	J7AJ3
Official No.	50998
IMO Number	9533385
Port of Registry	Portsmouth
Flag	Commonwealth of Dominica

DIMENSIONS

Length Overall	61.25 m
Breadth moulded	16.00 m
Depth moulded	6.00 m
Design draft	4.5 m
GT/NT	1973 / 591
DWT at assigned draft	1772.28T

MACHINERY

Main Engines	2 x Caterpillar 3516B HD Diesel Engines each 2575 BHP, Total 5150 BHP
Propellers	2 x Z.F Marine Pitch Propellers
Rudders	2 x Becker S-A 1500/165 F.2 Independent High Lift Rudders
Steering Gear	2 x Kobelt Electro Hydraulic Steering Gear System
Bow Thruster	1 x Kamome TCB-90DSMA 78.5KN Tunnel Thruster
Stern Thruster	1 x Kamome TCB-70DSMA 58.8KN Tunnel Thruster
Generators	2 x Stamford Shaft Generators, each 1000 kW (415V, 50Hz) + 2 x 405 kW (380V, 50Hz) Diesel Generators
Emergency Generator	1 x 80 kW

CAPACITIES

Deck Cargo	600 tons
Clear Deck Space	370 m ²
Deck Strength	7.5 tons/ m ²
Fuel Oil	742m ³
Drill Water	16.2 m ³ , combined with Ballast Water
Potable Water	478 m ³
Dry Bulk	4 Tanks - Total Capacity 169 m ³
Liquid Mud	245 m ³
Brine	190 m ³

PUMPING

Fuel Oil	100 m ³ /hr x 75 m head
Drill Water	100 m ³ /hr x 75 m head
Ballast Water	60 m ³ /hr x 60 m head
Potable Water	100 m ³ /hr x 75 m head
Liquid Mud	60 m ³ /hr @ 75 m head
Brine	100 m ³ /hr @ 75 m head 2
Bulk	x 20.5 m ³ /min x 5.6 bar

ACCOMMODATION

Officers	6 x Single Berth Cabins
Crew	8 x Two Berth Cabins + 2 x Three Berth Cabins
Charterer	5 x Four Berth Cabin
Total	Hospital provided on Main Deck 48 Berths, Fully Air-conditioned

ANCHOR HANDLING & TOWING

Bollard Pull	60 Tons (Min)
AHT Winch	Double Drum Waterfall Hydraulic
Line Pull Brake	150/25 Tons @ 6/36 m/min on 1 st layer
Capacity Drum	225 tons
Capacity	1000 m x 58 mm wire each Wheelhouse & Local
Control	
Stern Roller	3.5 m x 1.5 m dia, 180 T SWL
Karm Fork	300T SWL
Towing Pins	200T SWL
Storage Wire Reel Capacity	1 x 1000 m x 58 mm

ANCHORS & MOORING

Anchors	2 x 1575 kgs High holding Power Stockless (HHP)
Anchors Cables	2 x 330 m chain 38 mm dia, Grade 3a
Windlass	6.7Tons @ 15.0 m/min
Tugger Winch	Winch: 2 x 10Tons @ 10m/min
Capstan	2 x 5 Tons @ 15 m/min

NAVIGATION & COMMUNICATION

Radars	2 x Radars "X" Band
GPS	1 GPS
AIS	1 x AIS
Echo Sounder	1 x Echo Sounder
Auto Pilot	1 x Auto Pilot
Gyro Compass	2 x Gyro Compass
GMDSS	1 x Set for Area A1, A2 & A3 Operations
S.S.B.	1 x SSB
VHF/DSC	2 x VHF/DSC
VHF	1 x VHF
SSAS	1 x SSAS
Navtex	1 x Navtex
	P.A. System, EPIRB's & SART's provided

DYNAMIC POSITIONING SYSTEM (DP1)

IMO Class DP1 System	2 x DGPS
----------------------	----------

FIRE FIGHTING & LIFE SAVING APPLIANCES

As per SOLAS

EXTERNAL FIRE FIGHTING (FIFI 1)

Monitors	2 x Remote Controlled Monitors on Wheelhouse top, Capacity 1200 m ³ /hr Fixed Water Curtain System as per class rules
Pumps	2 x 1500 m ³ /hr driven by Main Engine through PTO
Foam Tank Capacity	14 m ³

SPEED

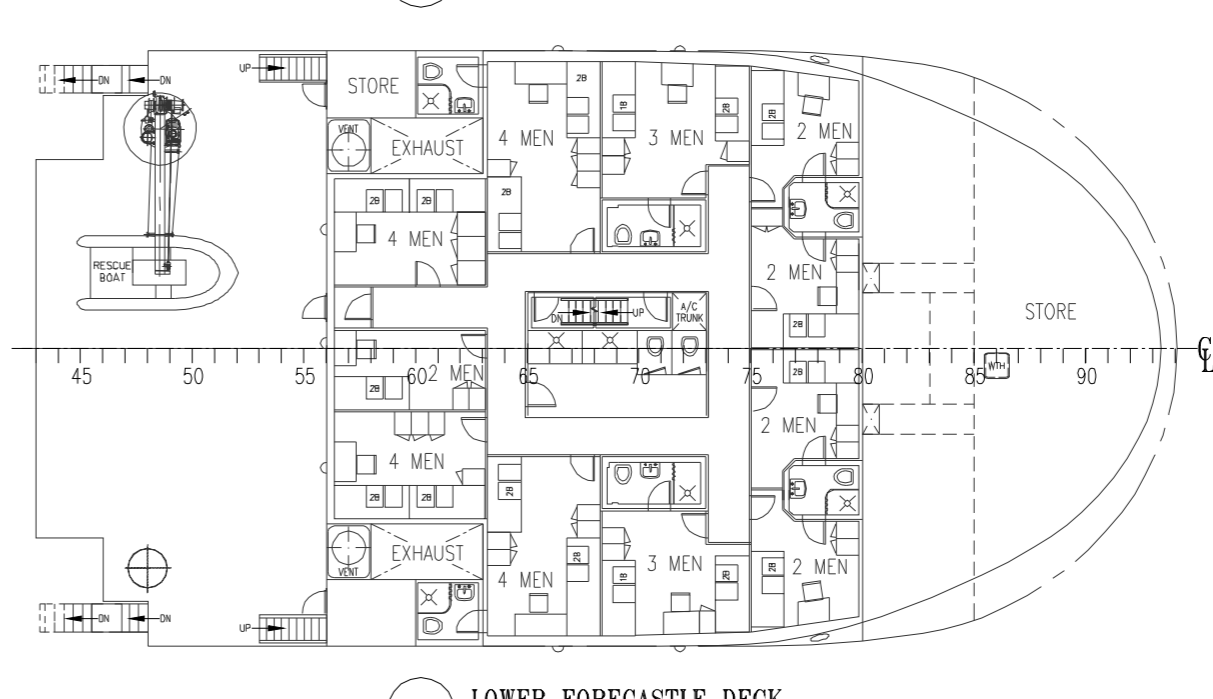
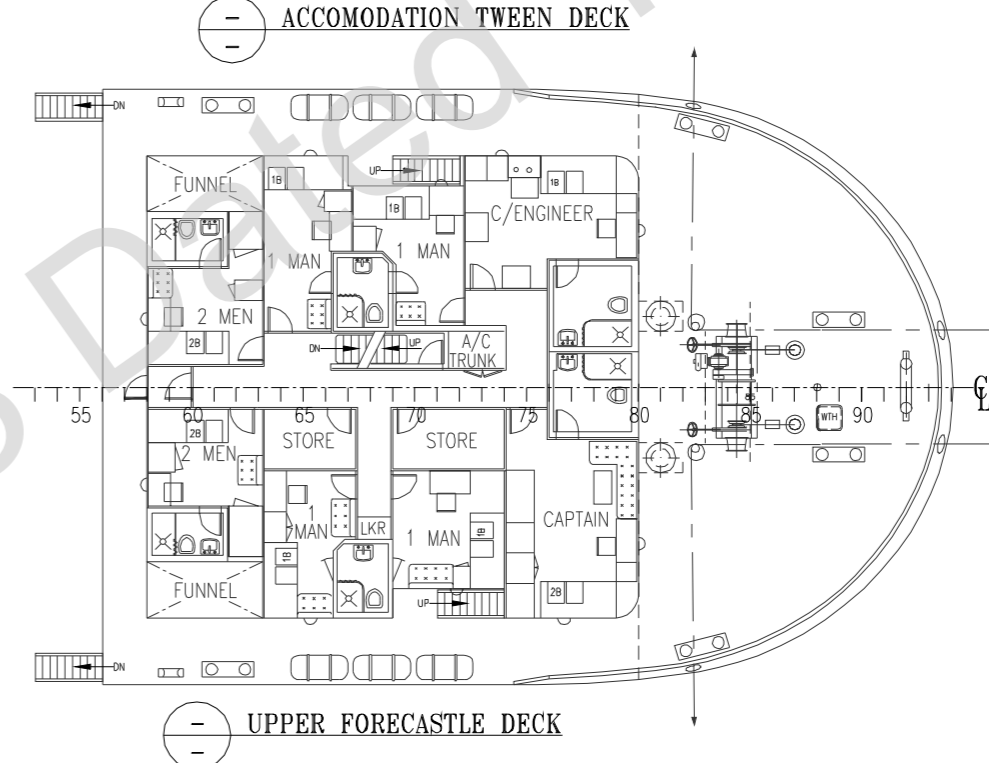
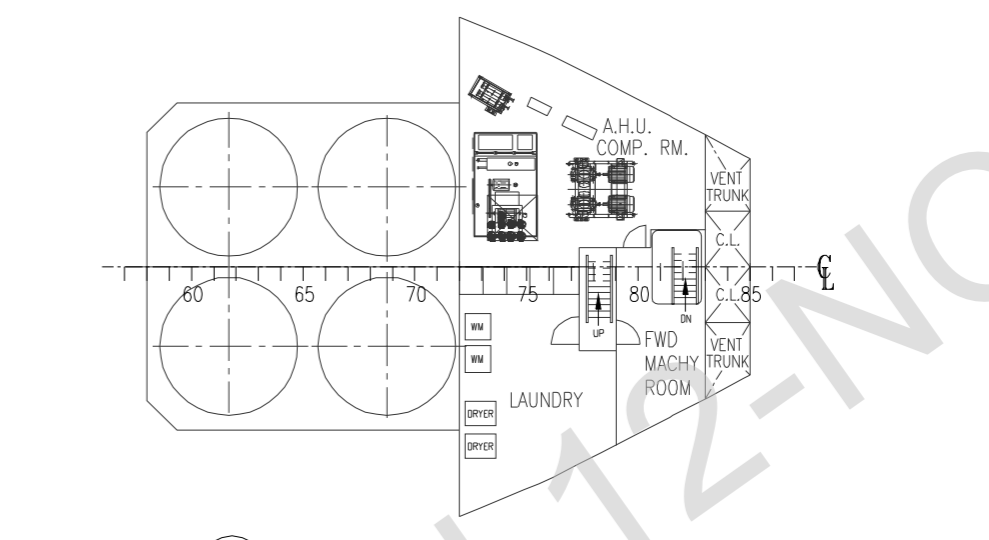
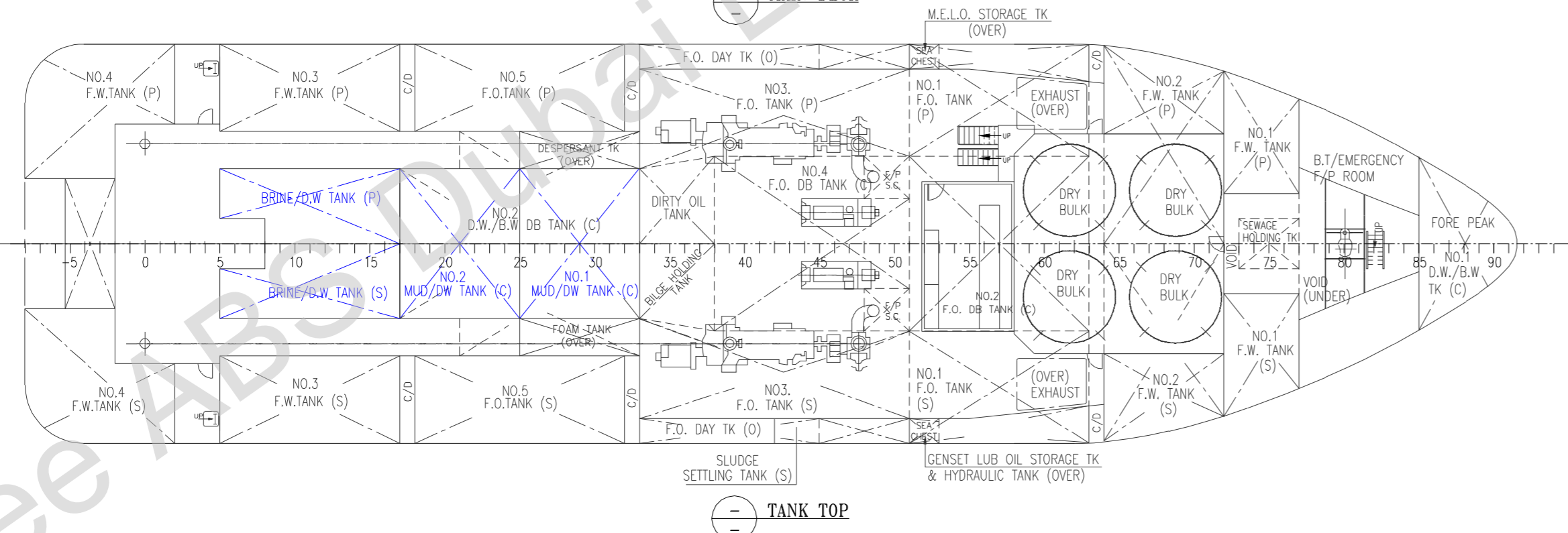
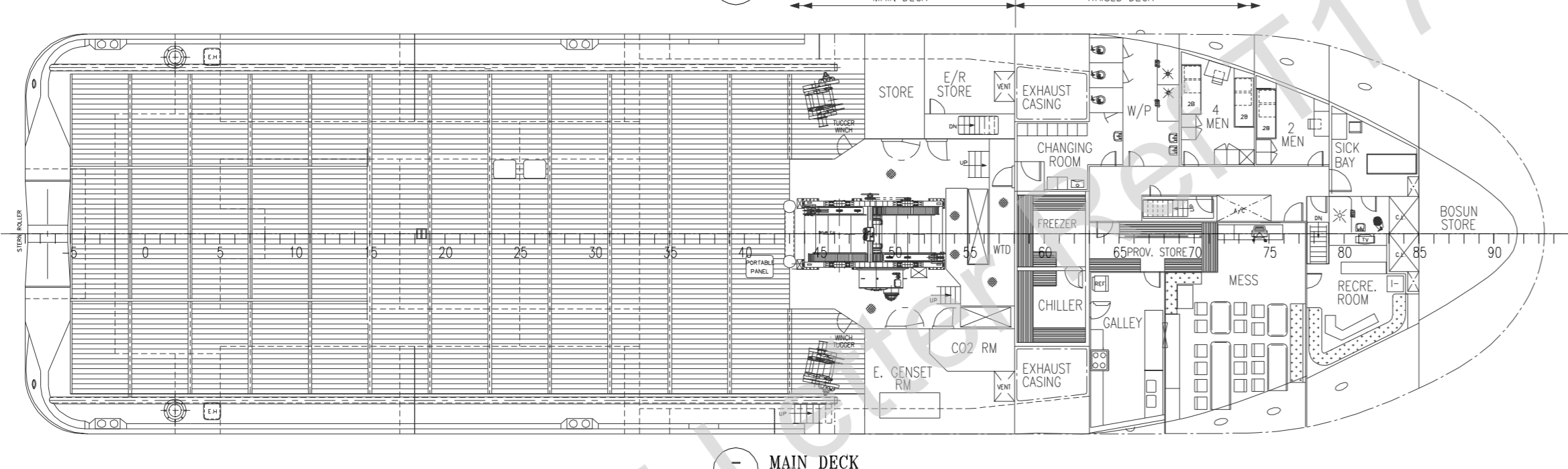
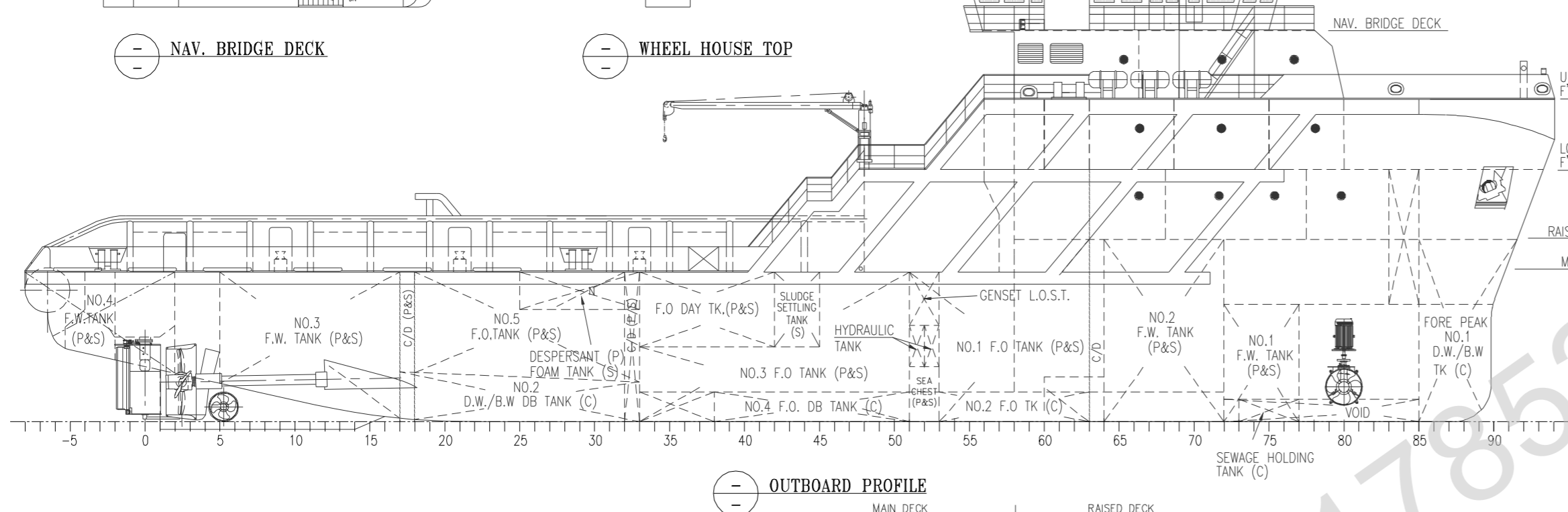
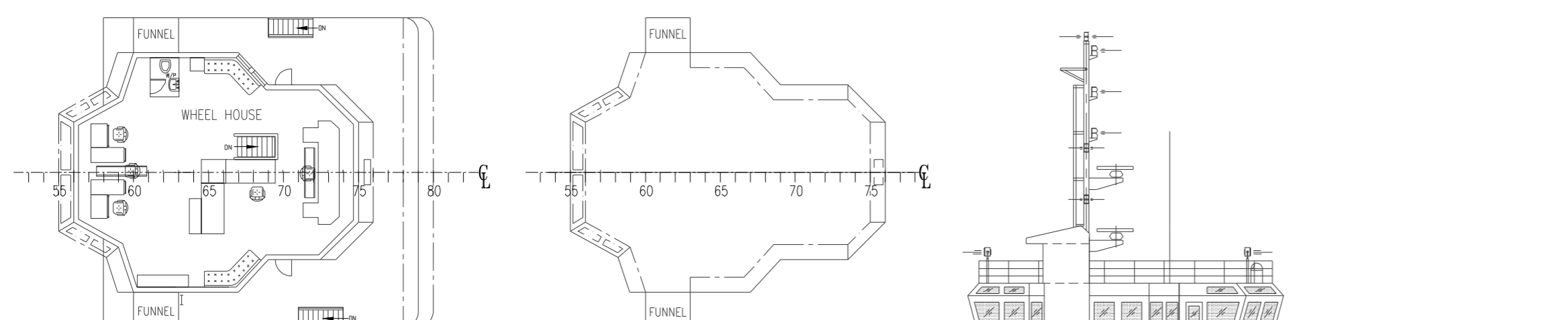
At 100 % MCR	12.3 knots
At 85 % MCR	11.5 knots
At Economical Speed	10 knots
Type of Fuel	HF HSD (Marine Gas Oil)

MISCELLANEOUS

One Deck Crane, 3 T SWL at 15 m radius.
1 x Semi Rigid Rescue Boat with 25 HP Outboard Motor; Launched by a Davit
Dispersant System with 2 x Aluminum Spray Booms 6 m long;
Pump & Proportionator & Dispersant Tank, Capacity 14m³.
Garbage Macerator fitted in Galley.
Sewage Treatment Plant in accordance with Marpol for 48 persons.
Oily Water Separator: Installed according to MEPC.107(49)
Reefer points on deck: 3 X 440V and 1 X 220 V

*Particulars are believed to be correct but not guaranteed. All figures given are approximate only. Owners reserve the right to amend the specifications without notification.

GENERAL ARRANGEMENT PLAN - ALLIANZ INTERSPRAY



REVIEWED

Details of this review are as indicated in the ABS letter

LEGEND

— : EXISTING STRUCTURE

— : NEW MODIFICATION

REFERENCE DWG.

01.AMC/2753/1_GENERAL ARRANGEMENT PLAN

NOTES:

01. EXCEPT NO.3 F.O TANK P&S AND F.O DAY TANK P&S. ALL OTHER F.O TANKS ARE CARGO OIL TANKS.

PRINCIPAL PARTICULARS

LENGTH (O.A.) : 61.25 m

LENGTH (B.P.) : 58.70 m

BREADTH (MLD.) : 16.00 m

DEPTH (MLD.) : 06.00 m

COMPLEMENT : 48 MEN

ALLIANZ INTERSPRAY

37581	0	10.11.18	INITIAL ISSUE	-	DD
UID	REV	DATE	DESCRIPTION	REVISED BY	APPROVED

REVISIONS

ARIES OIL FIELD SERVICES L.L.C

PO. BOX - 3965, WAREHOUSE #40
 MUSSAFAH INDUSTRIAL AREA, ABU DHABI, U.A.E
 Tel: +971(0)2 550 8893, Fax: +971(0)2 550 8996
 Website: www.ariesmar.com, Email: designauh@ariesofs.ae

This drawing, design concept, and specifications are the property of ARIES MARINE & ENGG. SERVICES and are furnished on a confidential basis with an expressed understanding that they will not be copied in any manner, used for manufacture, sold, transferred, nor used to the detriment of said firm without written permission. The recipient further agrees not to disclose these contents hereof to any other parties except for those specific purposes for which this drawing was issued.

TITLE: **GENERAL ARRANGEMENT PLAN**

VESSEL NAME : ALLIANZ INTERSPRAY	DATE : 10.11.18	DWG. No : DU1200/2001
DRAWN BY : NJL	JOB No : DU1200	SHEET : 01 OF 01
CHECKED BY : SSS	SCALE : 1:200	REV : 0 SIZE A2