



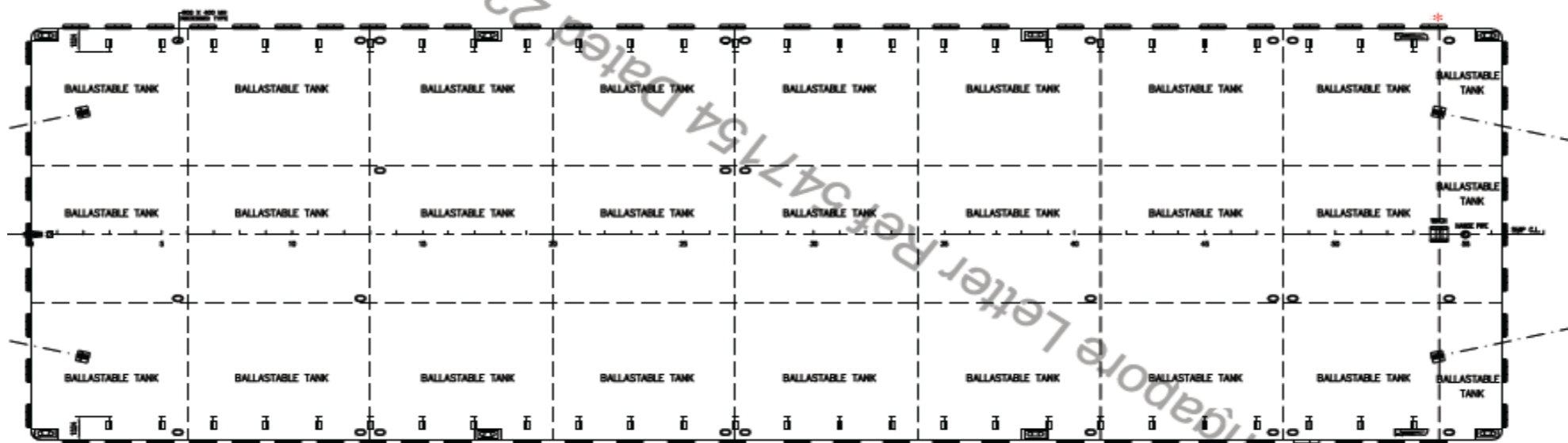
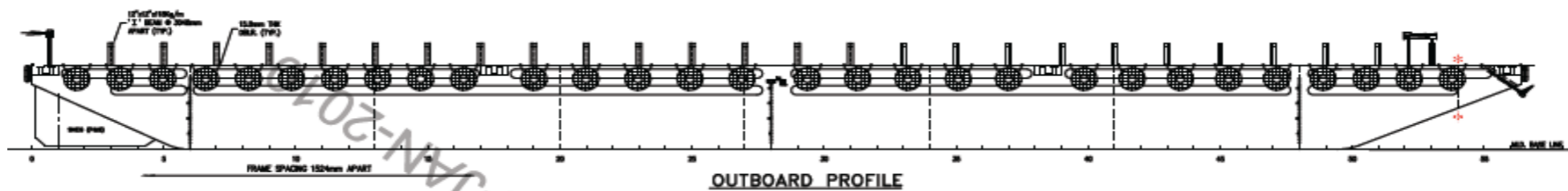
CI Tower, Abu Dhabi, UAE
 P.O Box: 26874 Abu Dhabi, UAE
 Tel : +971 2 632 9995
 Fax : +971 2 632 9997
 EMAIL: info@allianz-me.com

ALLIANZ CB 280

282 x 90 x 18 FT FLAT TOP DECK CARGO BARGE



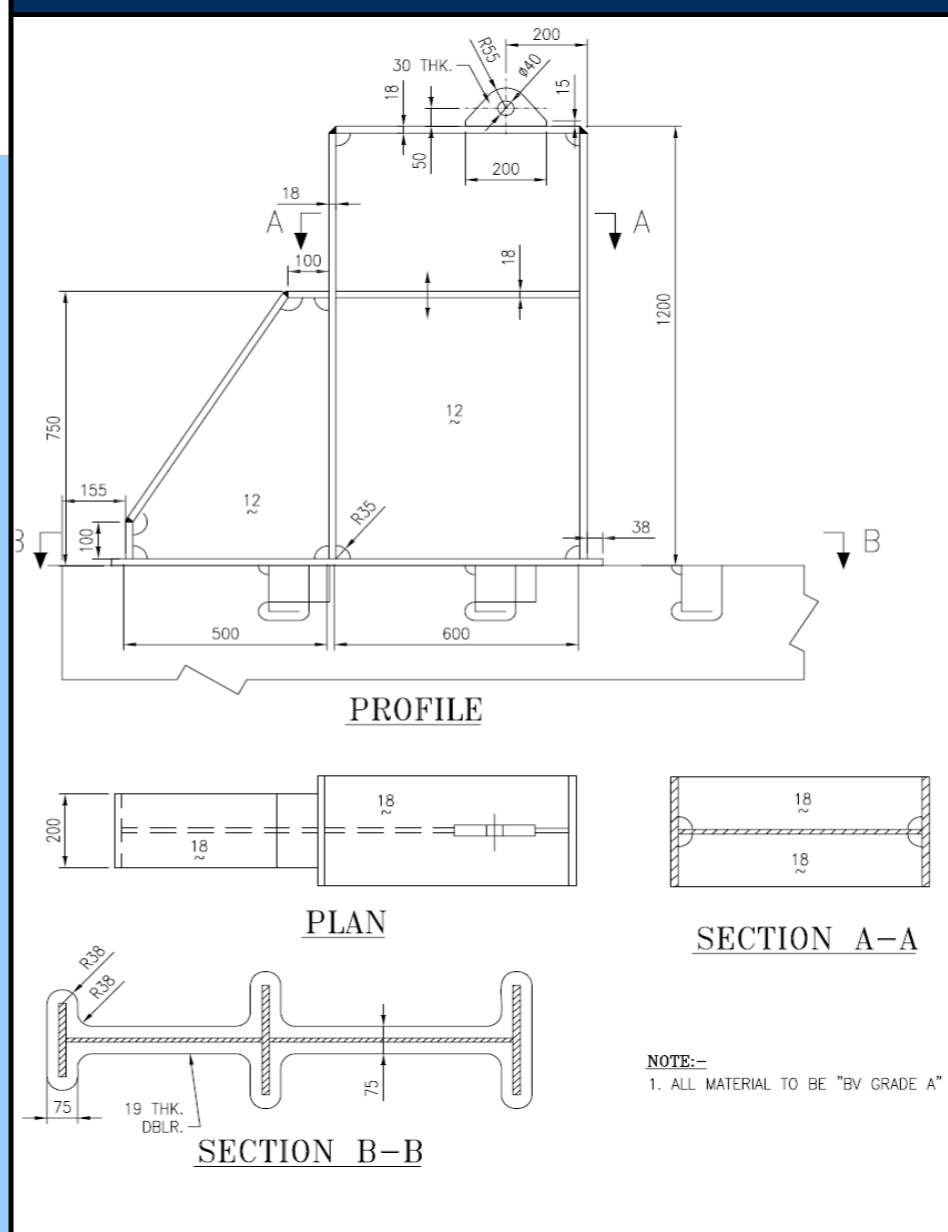
OUTLINE SPECIFICATION



PRINCIPAL PARTICULARS

Class	ABS
Port Of Registry	SINGAPORE
Keel Laid	2010
Year Built/Delivered	2010
Length (OA)	282 FT
Breadth (MLD)	90 FT
Depth (MLD)	18 FT
Deadweight	8000 TONS approx
GRT / NRT	3347 / 1004
Deck Strength	15 Tons / M2
Scantlings	Top 18.0 MM
	Side 14.0 MM
	Bottom 14.0 MM
No. of Bulkheads	8 nos.
No. of Manholes	27 nos.
No. of Stanchions	52. nos (P & S)
Ballastable	Yes.

STANCHION DETAILS



DECK EQUIPMENT

- One(1) 1000Kg. Stockless bower anchor
- One(1) hand winch capacity 10 ton c/w38mm dia x 200m wire rope.
- Cargo Stanchions 52 nos.fitted on P & S sides.
- Eight(8) Mooring Bollard
- Smit Towing Brackets fitted forward & Aft (P&S)
- Navigational Light Stands : Port/Stbd/Aft.

Particulars are believed to be correct but not guaranteed. Owners reserve the right to amend the specifications without notification

TECHNICAL SPECIFICATIONS