



SWISSCO SWIFT

45M ANCHOR HANDLING TUG

GENERAL DATA

Length	45 m
Breadth	11 m
Depth / Draft	4 m / 3.4m
GRT / NRT	499 / 149 tons
Registry	Singapore
Built	2010
Official Number	395898
Call Sign	9V8515
IMO Number	9550450
Classification	Bureau Veritas
Bollard Pull	41 tons

MAIN ENGINE / GENERATOR

Main Engine	2 x Caterpillar 3512 B @ 1750 bhp
Main Generator	2 x Caterpillar 3406C 415V/268kVA/215 kW/50Hz
Bow Thruster	HRP 3001 TT - 220 kW - 3 tons
Propulsion	2 x FPP in Kort Nozzle
Gearbox	Renjist WAF 763L
Max Speed	12 knots

DECK EQUIPMENT

AH / Towing Winch	Waterfall double drum - ME50 THATTW 50 tons Brakeholding: 120T
Tugger Winch	2 x 5 tons @ 15m / min
Anchor Windlass	3.3 tons – twin gypsy/warping drum
Anchor	Stockless Anchor - 900 kg
Stern Roller	SWL 150 tons; 3.5m x 1.5m
Wire Rope	Work: 40 mm x 150 m Tow: 40 mm x 600 m
Sharpjaw / Towpin	100 tons SWL
Crane	2 tons @ 6m

ACCOMMODATION

Single Cabin Twin	2 units
Cabin	3 units
4 Men Cabin Total	3 units 20 men

SAFETY EQUIPMENT

Fire Fighting	1500 m ³ /hr with 2 monitors
Engine Room Life	CO ₂ flooding system
Raft	2 x 20 men self-inflatable

NAVIGATION / COMMUNICATION EQUIPMENT

Radar	JRC JMA-5212-6HS
Echo Sounder	JRC FF60
GPS	JRC J-Nav 500
AIS	JRC JHS-182
Auto Pilot	Comnav - 2001
Compass	Ruian CGT-165 - Magnetic Ruian CGT-130 - Steering
Sat Phone/ Fax/	+870773183789
Email	Swisscoswift@SkyFile.com
Inmarsat C	JRC JUE-85
SSB	JRC JSB-196GM
VHF	2 x JRC NCM -1770
Navtex	JRC NCR-333
EPIRB	McMurdo
SART	2 x McMurdo-S4
PA System	Fitted
Search Lights	2 units fitted
Speed Log	JRC JLN 205
Walkie Talkie	2 x RTP 1000

TANK CAPACITY

Fuel Oil	277.89 m ³
Lube Oil	2.91 m ³
Fresh Water	154.43 m ³
Ballast Tank	87.4 m ³
Foam	5.23 m ³
Detergent	6.3 m ³
FO Cargo Pump	Desmi 580-70-220N/A09 -1- 50 m ³ /hr
FW Cargo Pump	Desmi 580-70-220N/A09 -1- 50 m ³ /hr
Flow Meter	1 unit fitted. Both ways

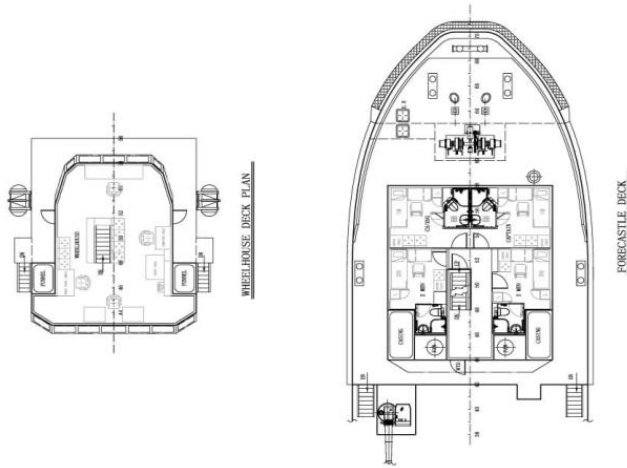
OTHER INFORMATION

Deck Space	20.3mx8.3m=168.49m ²
Deck Strength	5T/m ²
Deck Capacity	140T



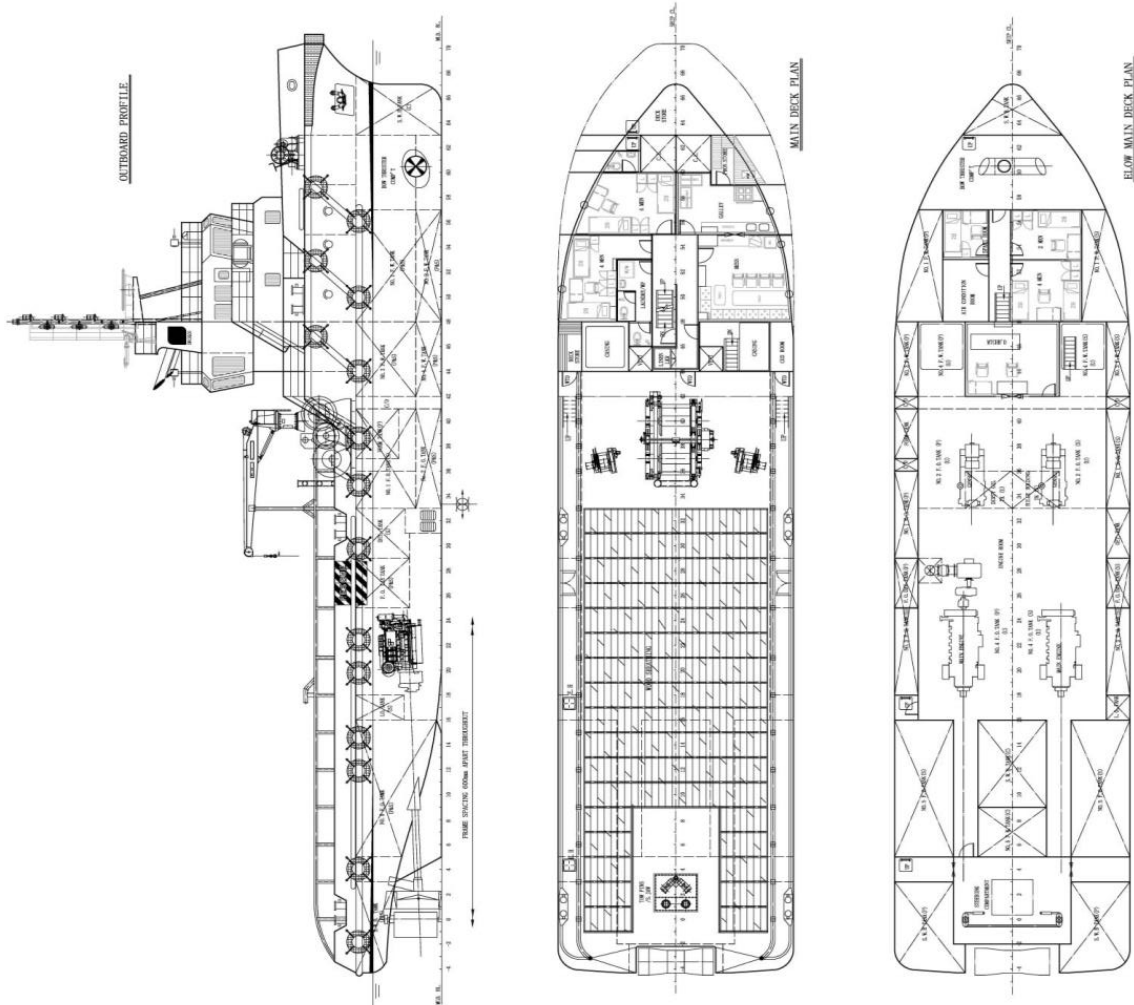
SWISSCO SWIFT

45M ANCHOR HANDLING TUG



PRINCIPAL DIMENSIONS

LENGTH OVERALL	45.00 M
LENGTH WATERLINE	42.75 M
LENGTH B. P.	40.00 M
BREADTH MOULDED	11.00 M
DEPTH MOULDED	4.00 M
DESIGN DRAFT MOULDED	3.20 M
FUEL OIL	280 M ³ (app.)
FRESH WATER	154 M ³ (app.)
CLEAR DECK AREA	210 M ²
MAIN ENGINE	2 x 1750 BHP
SPEED (TRIALS)	12.0 kn
BOLLARD PULL	40 T
COMPLEMENT	20 MEN



*Particulars are believed to be correct but not guaranteed. All figures given are approximate only. Owners reserve the right to amend the specifications without notification.