



## SWISSCO PANTHER

36M CREW / UTILITY BOAT

### GENERAL DATA

Length Overall	36m
Breadth	7.6m
Depth / Max Draft	3.65m/2.36m
GRT / NRT	249/152 tons
Registry	Panama
Built	2015
IMO	9717931
Call Sign	HP4743
Registration Number	46730-PEXT
Classification	ABS A1, HSC+AMS

### MAIN ENGINE / GENERATOR

Main Engine	3 x Cummins KTA 38-M2 1350bhp @ 1900 rpm
Main Generator	2 x Cummins 80 MXDG @ 91kW//415v/50Hz
Gear Box	3 x Twin Disc MGX6690SC
Bow Thruster	1 x 1 ton Thrustmaster
Propulsion	3 x FPP bronze alloy propellers
Speed	25 knots @ 100% MCR 23 knots @ 85% MCR

### ACCOMMODATION

Passenger Seating Area	70 Personnel (reclining type) 2 x toilet
1-man cabin	2 units
2-men cabin	4 units
Total	10 crews
Toilet/Shower	1 unit
Crew Facility	1 x Galley/Mess/Store
Air Conditioning	Central type for all passenger/ Crew/ Bridge area

### OTHER INFORMATION

Deck Space	94m <sup>2</sup>
Deck Strength	2 tons / m <sup>2</sup>
Deck Cargo	50 tons
Rescue Boat	1x 6 men type with 25hp outboard
Sewage Treatment	Fitted
Oily Water Plant	Fitted

### TANK CAPACITY

Fuel Oil	57.4 m <sup>3</sup> (approx.)
Fresh Water	21.25 m <sup>3</sup> (approx.)
Lube Oil	2.3 m <sup>3</sup>

### NAVIGATION / COMMUNICATION EQUIPMENT

Radar	1 x Furuno FR-8062, 1 x MFD 12
Echo Sounder	1 x Furuno CV-620
GPS	1 x GP-32 GPS
Auto Pilot	1 x Robertson AP35
Compass	1 x Robertson RGC50 Gyro 1 x Saura Magnetic
Inmarsat C	Sailor 6110
SSB	1 x Furuno FS-1570
AIS	Sailor 6280
VHF	Sailor 6222
MH/HF Radio	Sailor 6310 150W Class A
Navtex	Sailor 6391
EPIRB	1 x McMurdo E5
SART	1 x McMurdo S5
PA System	Fitted
Navigation Lights	Aqua Signal
Search Lights	1 x Francis 1000 watts

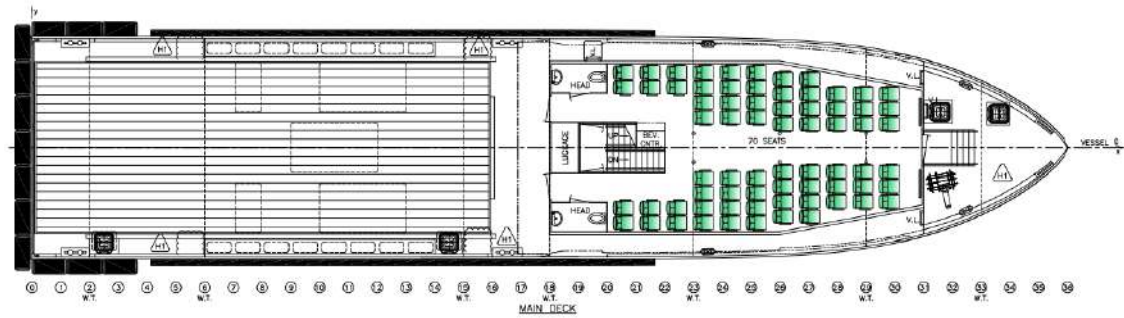
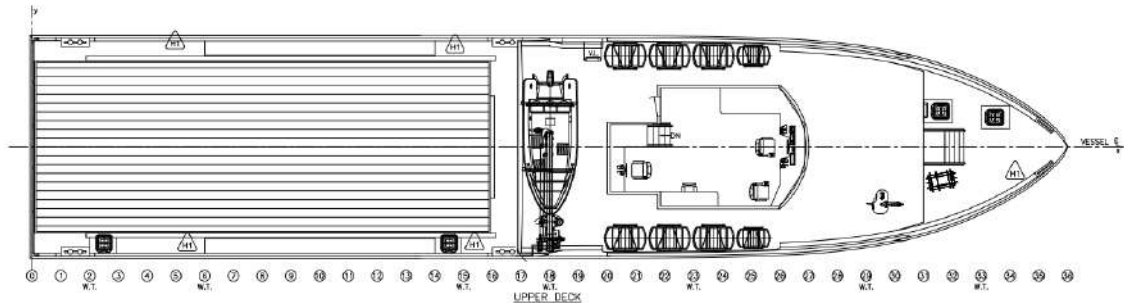
### SAFETY EQUIPMENT

Life Rafts	For 70 + 10 personnel
Fire/Heat Detection	Fitted
H2S Detection	Fitted
External FiFi	600 m <sup>3</sup> /hr with 2 monitors
CO <sub>2</sub> System	Fitted in Engine Room
Dispersant System	Fitted with 500 ltrs tank

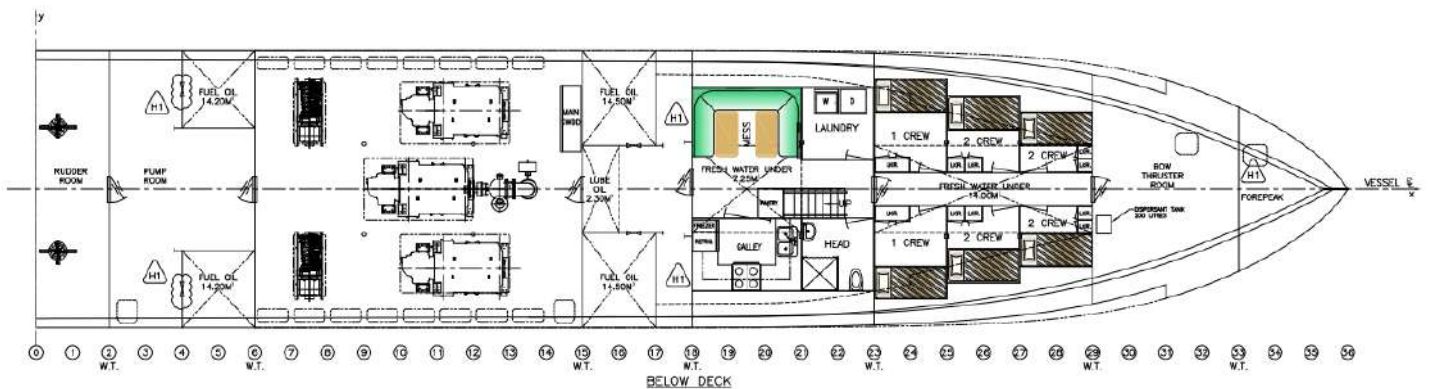
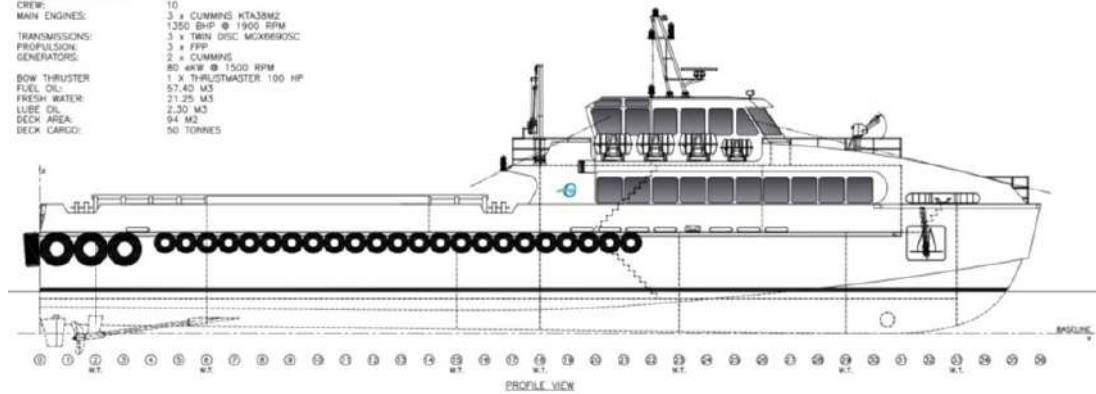


## SWISSCO PANTHER

36M CREW / UTILITY BOAT



- INDUSTRIAL PERSONNEL: 70
- CREW: 10
- MAIN ENGINES: 3 x CUMMINS KTA38M2  
1350 BHP @ 1900 RPM
- TRANSMISSIONS: 3 x TRW DISC MOXBERGSC
- PROPELLSION: 3 x FPP
- GENERATORS: 2 x CUMMINS  
80 kW @ 1500 RPM
- BOW THRUSTER: 1 x THRUSTMASTER 100 HP
- FUEL OIL: 57.40 M3
- FRESH WATER: 21.25 M3
- LUBE OIL: 2.30 M3
- DECK AREA: 94 M2
- DECK CARGO: 56 TONNES



\*Particulars are believed to be correct but not guaranteed. All figures given are approximate only. Owners reserve the right to amend the specifications without notification.