



## NEWCRUZ 331

### MAIN PARTICULARS

Year Built:	2011
Flag:	Indonesia
Class :	BKI & ABS (Dual Class) ⊗A1, Steel Deck Barge
Length Overall	330 ft (100.58m)
Breadth Moulded	100 ft (30.48m)
Depth Moulded	20 ft (6.10m)
Design Draft	4.5m (Approx.)
Deadweight	10,500 Tons (Approx.)
GRT / NRT	4955T / 1486T
Deck Strength	20 Ton/m <sup>2</sup>

Newcruz 331 is a Flat Top Barge

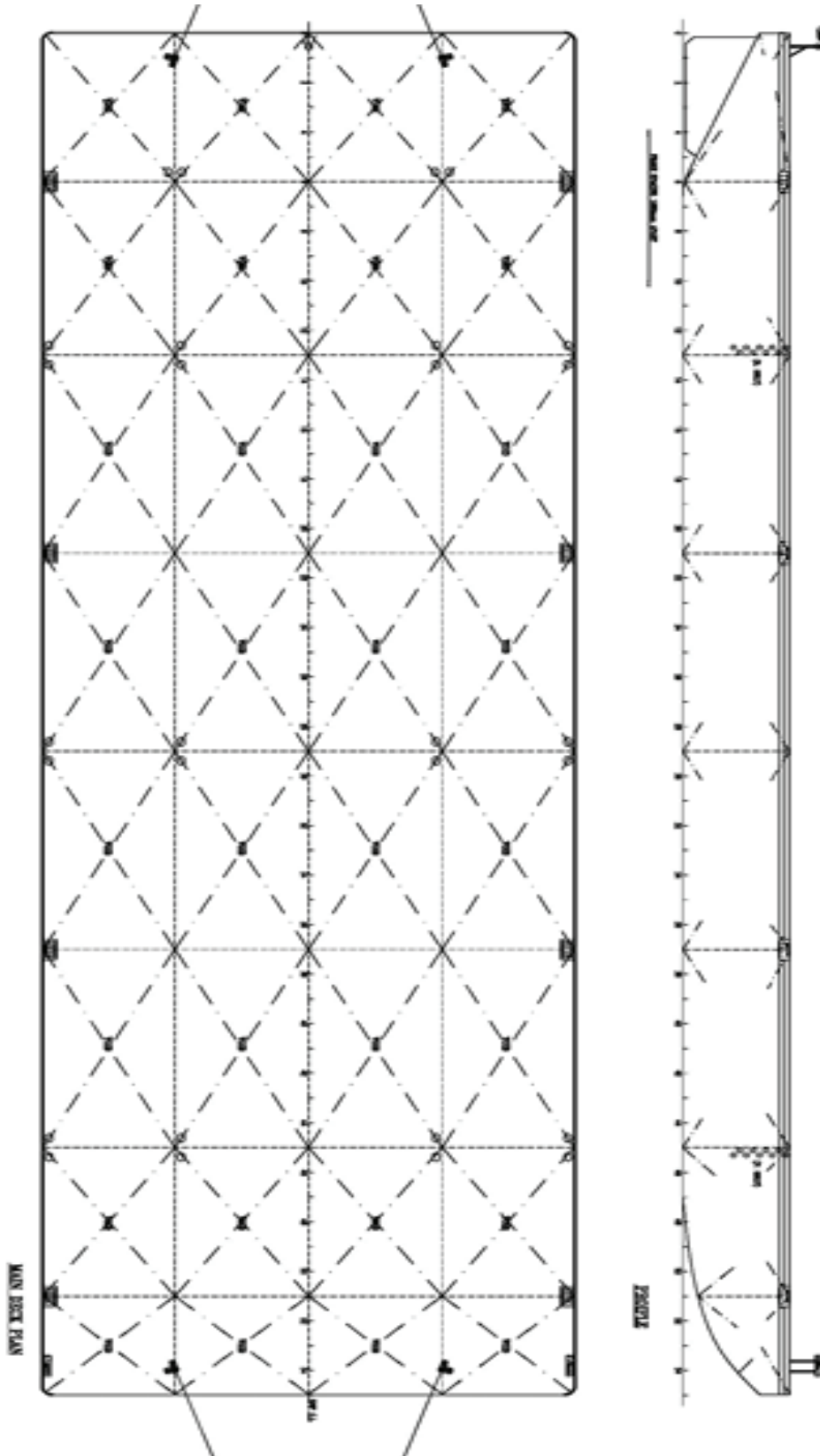
- » Ballastable
- » 330 ft x 100 ft x 20 ft
- » Deck Loading of 20.0Ton/m<sup>2</sup>

### SCANTLING

Deck Plating	20.00mm
Bottom Plating	14.00mm
Deck Plating	14.00/16.00mm
Longitudinal/Transverse Bulkhead	10.00mm
Mooring Bollards	8 double bits
Towing Brackets	4 with 2 x 80 Tons SWL .Schmitt are fitted on main deck fwd and aft
Anchor Winch	5 Tons hand operated
Anchor	2,100kg
Fender	16mm x 600mm,double plate c/w slot welds to be fitted all round
Manhole	1 (600 x 400mm) for each tank with clear opening oval flush type, studs and nuts to be of stainless steel
Navigation Light	Bow lights (port and starboard) and stern light



## NEWCRUZ 331



\*Particulars are believed to be correct but not guaranteed. All figures given are approximate only. Owners reserve the right to amend the specifications without notification.