



BOURBON GULF 101

DP 1 AHTS | 75 Metric Ton bollard Pull | 150 Metric Ton Line Pull Winch

MAIN CHARACTERISTICS

Length overall:	64.80 m.
Breadth moulded:	16.00 m.
Depth main deck:	5.80 m.
Max draft:	4.90 m
Deadweight at max draft:	1,622 t.
Bollard pull:	75 t.
Gross/Net tonnage:	1,966/590

REGISTRATION

Type:	AHTS. vessel CONAN WU Design
Owner:	Bourbon Offshore Gulf
Delivery:	2007
Builder:	Dayang Shipyard - China
Flag:	St Vincent & the Grenadines
Classification:	BV. Class 1 *Hull, *Mach, Tug, Supply Vessel, Unrestricted navigation, Fire Fighting Ship Water spray, DYNAPOS AM/AT (Class 1) *AUT-UMS. Optional: Special Service/Stand by Rescue Vessel.

PERFORMANCE

Max Speed	13 knots
Service Speed	12 knots
Economic Speed	09 knots

ACCOMMODATION

- Fully air-conditioned.
- Accommodation for 28 persons composed of:
 - 6x single cabins, 5x 2 men cabins, 3x 4 men cabins.
- 1 Office, 1 hospital, 2 mess/day rooms, laundry, galley, provision rooms, stores.

PROPULSION - MACHINERY

- Main engines:** 2x 1,980 kW, MAK (total: 3,960 kW = 5,380 hp)
- Propellers:** 2 Type CPP, dia: 2,900 mm in nozzles
- Rudders:** 2 high lift flap type
- Shaft generators:** 2x 750 kVA at 1,800 rpm, 3x 450V 60 Hz.
- Auxiliary generators:** 2x 440 kVA at 1,800 rpm, 3x 450V 60 Hz.
- Emergency generator:** 1x 110 kVA at 1,800 rpm, 3x 450V 60 Hz.

THRUSTERS

- Bow thrusters:** 2x 500 kW tunnel, electrically driven with CPP

TOWING/ANCHOR HANDLING WINCH

- Main winch:** 1 electro-hydraulic high pressure winch composed of 2 declutchable drums in waterfall arrangement each equipped with:

- Drum size: Dia. 900/2,090 mm x 1.800 mm length.
- Drum capacity: 1,500 m of 2 1/4" steel wire rope.
- Brake holding load: 225 t on 1st layer.
- Rated Pull: 150 t on 1st layer at 0-6 m/min.
- Auto spooling device for Anchor Handling Drum.
- 2 cable lifters 3" and 2 1/2".

- Tow line:** 900 m of 2 1/4" dia.
- Spare tow line idem on a spare drum.
- Work wire: 300 m of 2 1/2" dia.

- Windlass:** 1 combined mooring and windlass winch, 12 t SWL at 14 m/min.

- Storage reel:** 1 electro-hydraulic unit with 1 drum.
- Pull at 1st layer: 12 t at 0-25 m/min.
- Drum capacity: 1,500 m of 2 1/4" dia. wire.
- Drum size: 800/2,200 mm dia x 1,500 mm length.

- Stern roller:** 1x 250 mt SWL,
Dia: 1,500 mm, Length: 4,000 mm.

- Towing pins:** 1 pair of vertical/retractable type, 200 t SWL.
- Shark jaws:** 2 of 200 t SWL.
- Tuggers:** 2x 10 t at 25m/min.
- Capstans:** 2x 5 t at 15m/min.
- Deck provisions crane:** 1.7 t at 14 m.

CAPACITIES & PUMPS

Cargo deck area:	420 m ² (33x13m) @ 5.0 t/m ² .
Deck cargo :	800 tons @ 0.9 m above deck.
DW/WB:	464 m ³ - 1x120 m ³ /h at 7 bars.
Fuel oil cargo:	607 m ³ - 1x120 m ³ /h at 7 bars.
Fresh water:	446 m ³ - 1x 120 m ³ /h at 7 bars.
Liquid mud/Brine:	392 m ³ - 1x 120 m ³ /h at 7 bars.
Liquid muds tank are designed for products up to 2.5 sg and are equipped with agitators and circulation.	
Chain locker/Brine/Mud:	112 m ³ .
Dispersant:	20 m ³ .
Foam:	18 m ³ .
Bulk cement	170 m ³ - 4 tanks-sg 2.35-2 products 2 air compressors- 2x20m ³ /min at 5.6 bars

ELECTRONICS

• NAVIGATION

- 2 radars, 1 gyrocompass, 1 magnetic compass, 1 digital echo-sounder.
- 1 speed log.
- 1 autopilot system.
- 1 GPS.

• COMMUNICATION

- 1 radio system compliant with GMDSS A3 rules including:
- 1 SSB duplex DSC 2 INMARSAT C 2 VHF EPIRB SART NAVTEX.
- 1 Iridium system.
- 1 INMARSAT mini M.
- 1 VSAT, 1 TVRO system.

- E-mail and on-board computer network system.
- Automatic exchange telephone system with facilities in each room.

DYNAMIC POSITIONING SYSTEM (DP 1)

- Comply with class notation DYNAPOS AM/AT (class 1).
- System allowing: dynamic positioning, automatic speed control.
- Reference system: 1 DGPS.
- Sensors: 1 gyrocompass, 1 wind sensor, 1 Fanbeam.

SPECIAL EQUIPMENT

- Life saving arrangement:** 1 Norsafe rescue boat with recovery davit/ single point launching, 75 hp Diesel inboard engine, Jet propulsion, max speed 20 knots, capacity: 6 persons.
- Life rafts, total capacity: 50 persons on each side.
- Lifebuoys, life Jackets.

- FIFI I:** 2,400 m³/h, (Remote controlled from wheelhouse).
- 2 water monitor 1,200 m³/h at 12 bars.
(with foam capacity 300m³/h).
- Pumps: 2x 1,500 m³/h at 14 bars each.
- Deluge system.

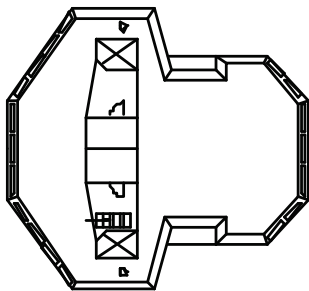
Rubber push bow.

*Particulars are believed to be correct but not guaranteed. All figures given are approximate only. Owners reserve the right to amend the specifications without notification.

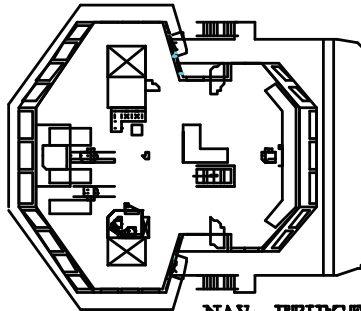


BOURBON GULF 101

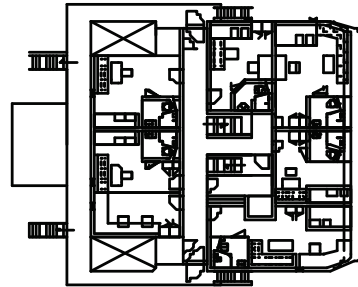
DP 1 Anchor handling tug supply vessels | 75 Metric ton bollard pull | 150 Metric ton line pull winch



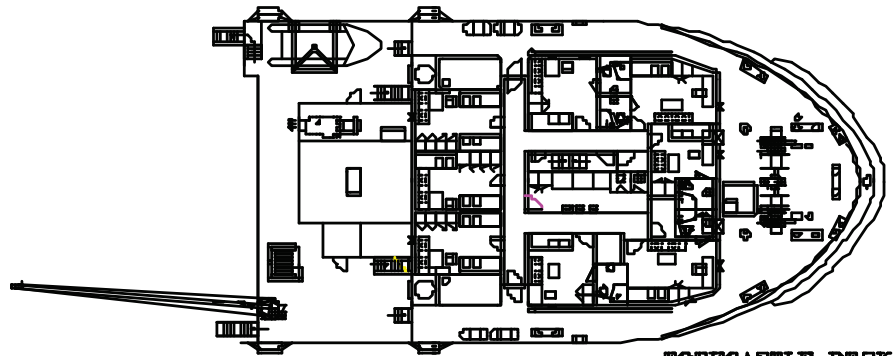
WHEELHOUSE TOP



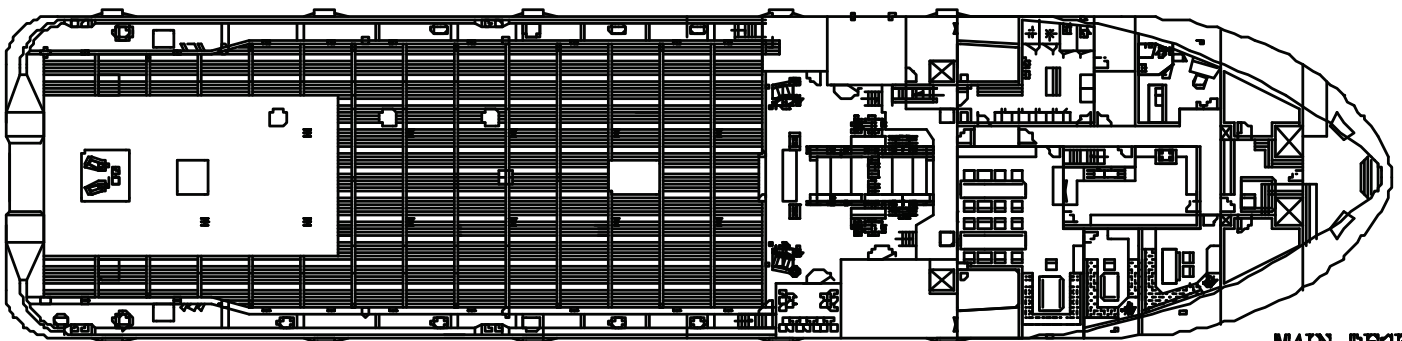
NAV. BRIDGE DECK



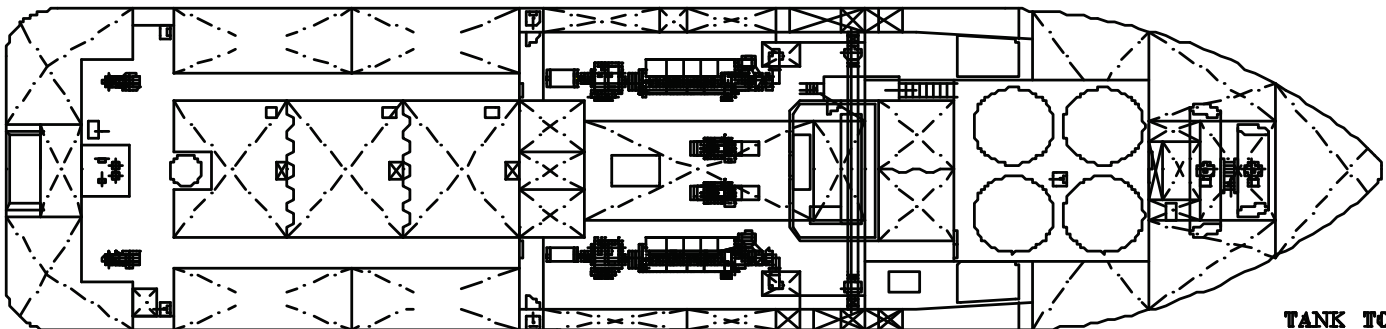
UPPER DECK



FORECASTLE DECK



MAIN DECK



TANK TOP

*Particulars are believed to be correct but not guaranteed. All figures given are approximate only. Owners reserve the right to amend the specifications without notification.