



ALLIANZ CB300

300 x 90 x 20 FT FLAT TOP DECK CARGO BARGE

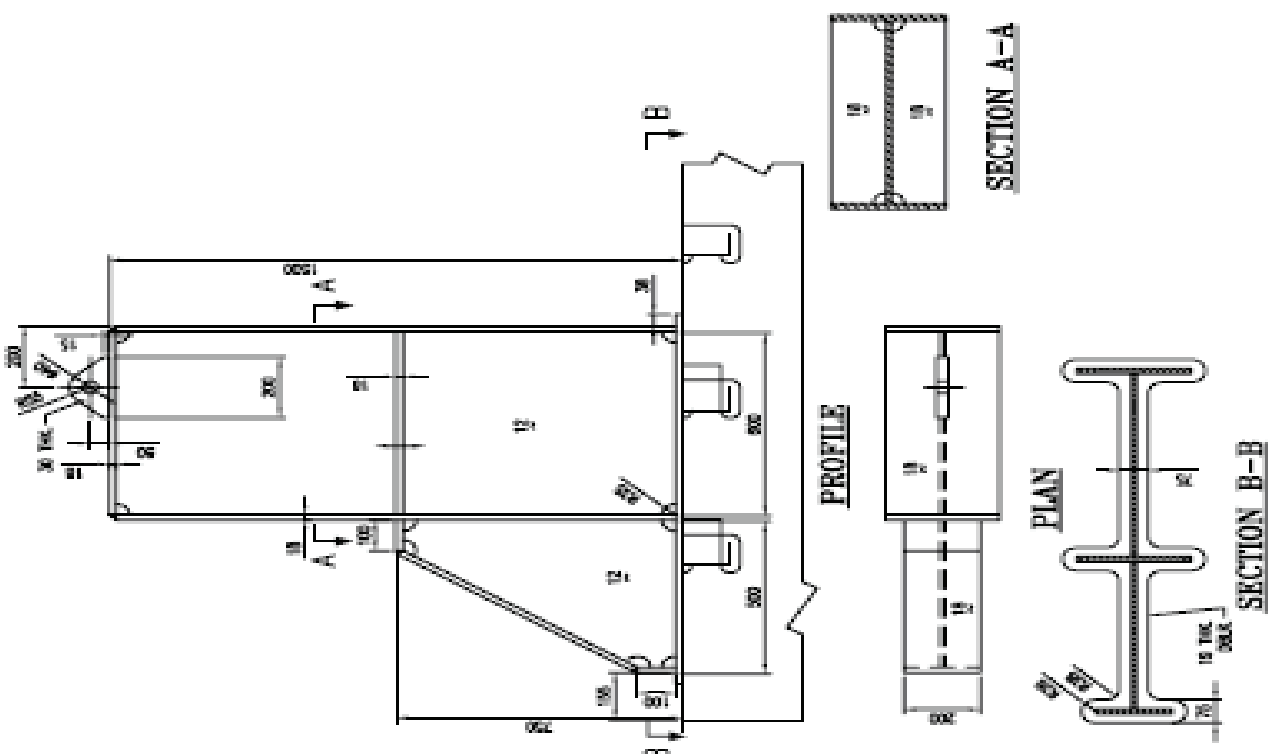
PRINCIPAL PARTICULARS

Class	ABS
Port Of Registry	SINGAPORE
Keel Laid	2009
Year Built/Delivered	2010
Length (OA)	300 FT
Breadth (MLD)	90 FT
Depth (MLD)	20 FT
Deadweight	9,000 TONS approx
GRT / NRT	3924/1177
Deck Strength	15 Tons / M2
Scantlings	Top 18 MM Side 14 MM Bottom 14 MM
No. of Bulkheads	2 Longitudinal 8 Transverse
No. of Manholes	27
No. of Stanchions	26 at starboard 26 at port side
Ballastable	Yes

DECK EQUIPMENT

1 x 1000 KG Stockless Anchor
 1 X 10 T Capacity, Manual Anchor Winch c/w wire 25mm x 100m
 Cargo Stanchions 52 Nos "I" Beam
 Fendering : Heavy Duty Tyres
 8 x Mooring Bollards
 Smit Towing Brackets Forward & Aft
 Navigation Light Stands : Port / Stbd / Aft

STANCHION DETAILS

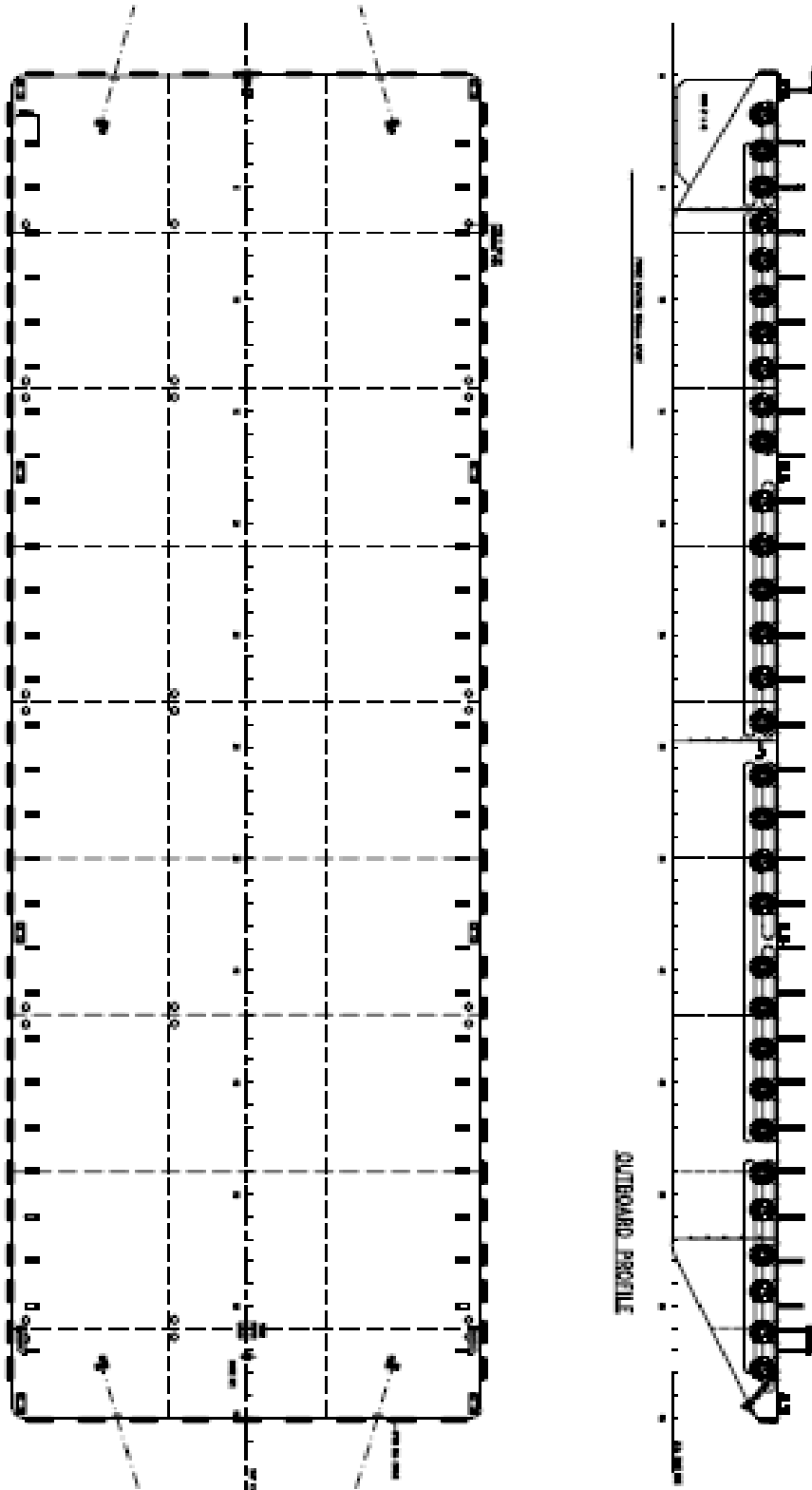


*Particulars are believed to be correct but not guaranteed. All figures given are approximate only. Owners reserve the right to amend the specifications without notification.



ALLIANZ CB300

300 x 90 x 20 FT FLAT TOP DECK CARGO BARGE



*Particulars are believed to be correct but not guaranteed. All figures given are approximate only. Owners reserve the right to amend the specifications without notification.