



ALLIANZ CB 252

250 x 80 x 16 FT FLAT TOP DECK CARGO BARGE

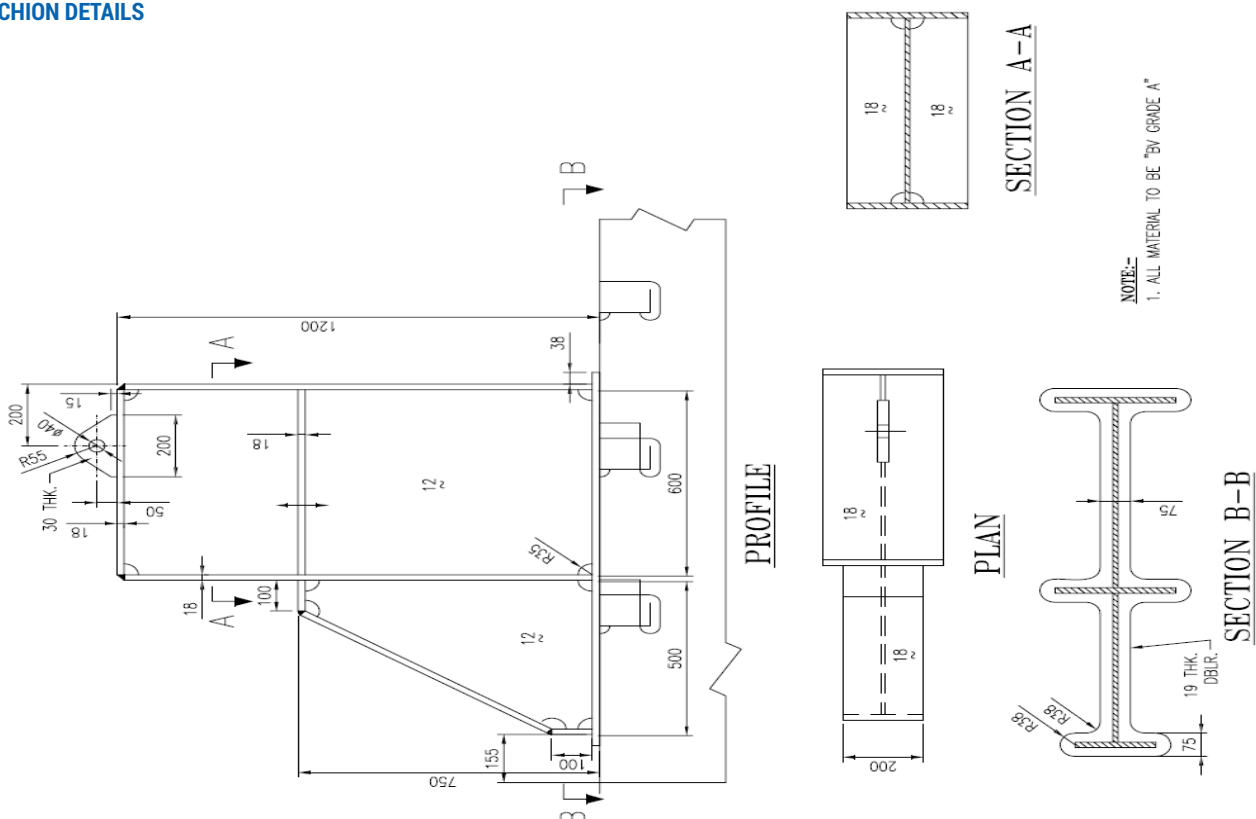
PRINCIPAL PARTICULARS

Class	IRS
Port Of Registry	PORTSMOUTH
Keel Laid	2009
Year Built/Delivered	2009
Length (OA)	250 FT
Breadth (MLD)	80 FT
Depth (MLD)	16 FT
Deadweight	5,288 TONS approx
GRT / NRT	2224 / 667
Deck Strength	15 Tons / M ²
Scantlings	Top 18 MM Side 12 MM 2
No. of Bulkheads	Longitudinal 7 Transverse
No. of Manholes	24
No. of Stanchions	23 at starboard 23 at port side Yes
Ballastable	

DECK EQUIPMENT

1 x 1000 KG Stockless Anchor
 1 X 10 T Capacity, Manual Anchor Winch c/w wire 25mm x 100m
 Cargo Stanchions 46 Nos - 600mm x 300mm x 1.2m
 Fendering : Heavy Duty Tyres
 8 x Mooring Bollards
 Smit Towing Brackets Forward & Aft
 Navigation Light Stands : Port / Stbd / Aft

STANCHION DETAILS

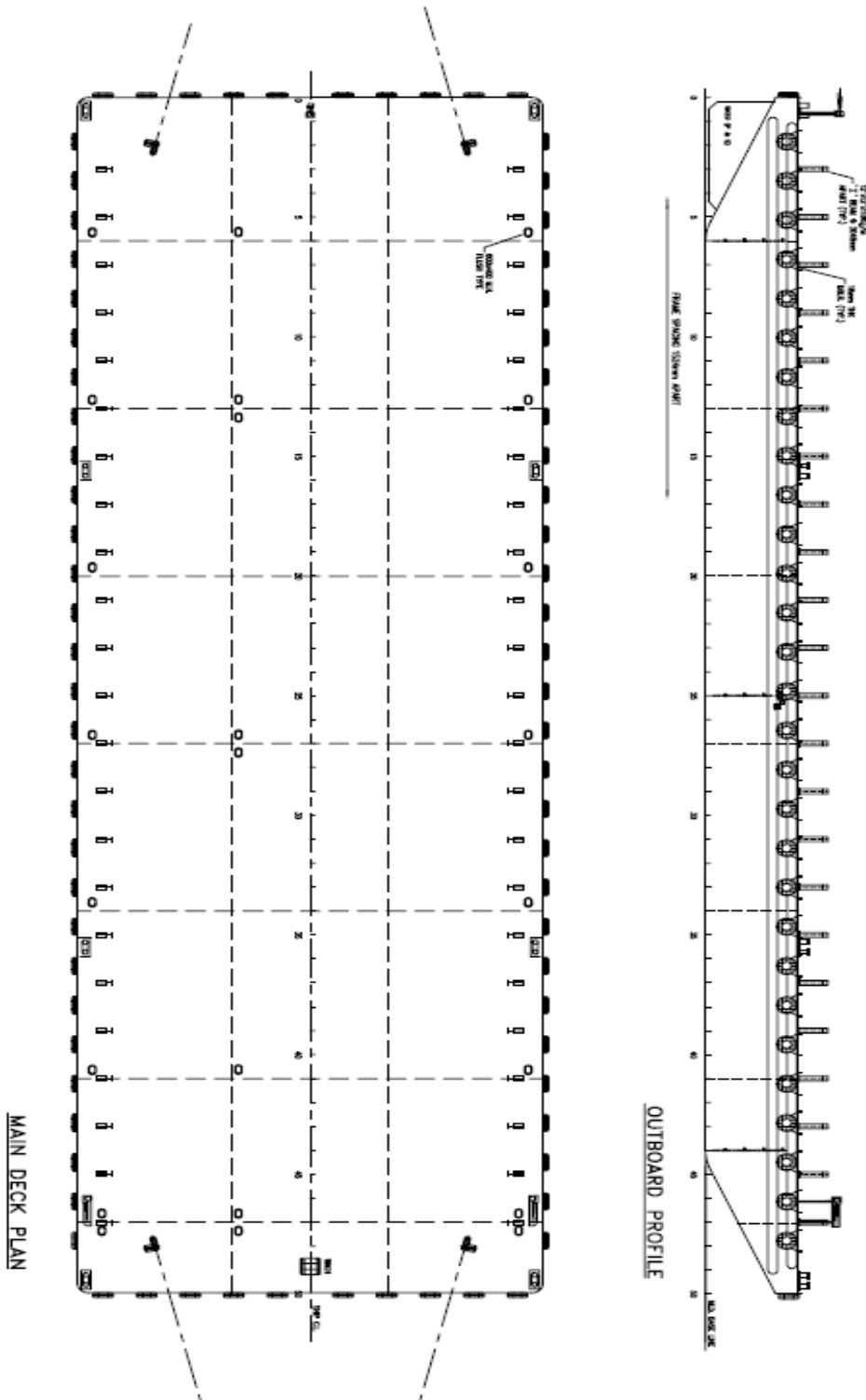


*Particulars are believed to be correct but not guaranteed. All figures given are approximate only. Owners reserve the right to amend the specifications without notification.



ALLIANZ CB 252

250 x 80 x 16 FT FLAT TOP DECK CARGO BARGE



*Particulars are believed to be correct but not guaranteed. All figures given are approximate only. Owners reserve the right to amend the specifications without notification.