



ALLIANZ CB 250

250 x 80 x 16 FT FLAT TOP DECK CARGO BARGE

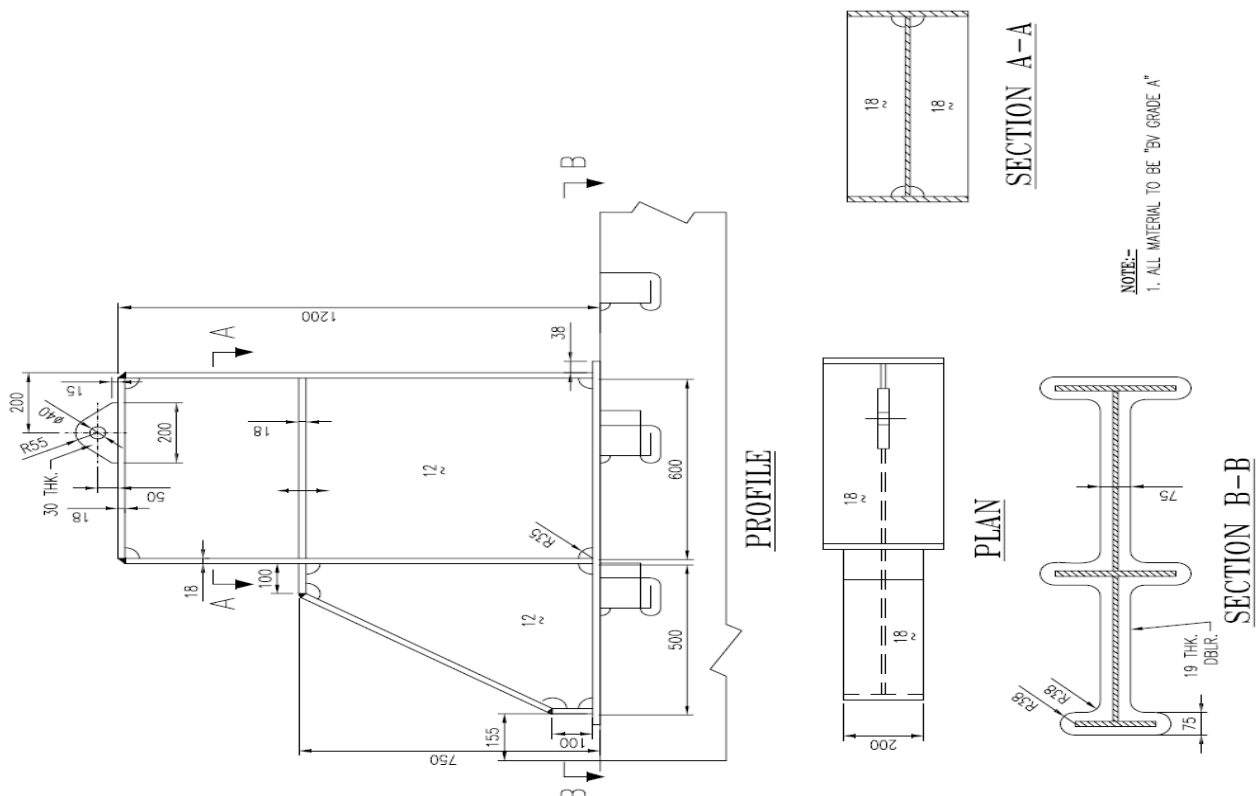
PRINCIPAL PARTICULARS

Class	B. V.
Port Of Registry	Portsmouth
Keel Laid	2007
Year Built/Delivered	2008
Length (OA)	250 FT
Breadth (MLD)	80 FT
Depth (MLD)	16 FT
Deadweight	5,300 TONS approx
GRT / NRT	2306 / 692
Deck Strength	15 Tons / M ²
Scantlings	Top 18 MM Side 12 MM
No. of Bulkheads	2 Longitudinal 7 Transverse
No. of Manholes	24
No. of Stanchions	23 at starboard 23 at port side
Ballastable	Yes

DECK EQUIPMENT

- » 1 x 1000 KG Stockless Anchor
- » 1 X 10 T Capacity, Manual Anchor Winch c/w wire 25mm x 100m
- » Cargo Stanchions 46 Nos - 600mm x 300mm x 1.2m
- » Fendering : Heavy Duty Tyres
- » 8 x Mooring Bollards
- » Smit Towing Brackets Forward & Aft
- » Navigation Light Stands : Port / Stbd / Aft

STANCHION DETAILS

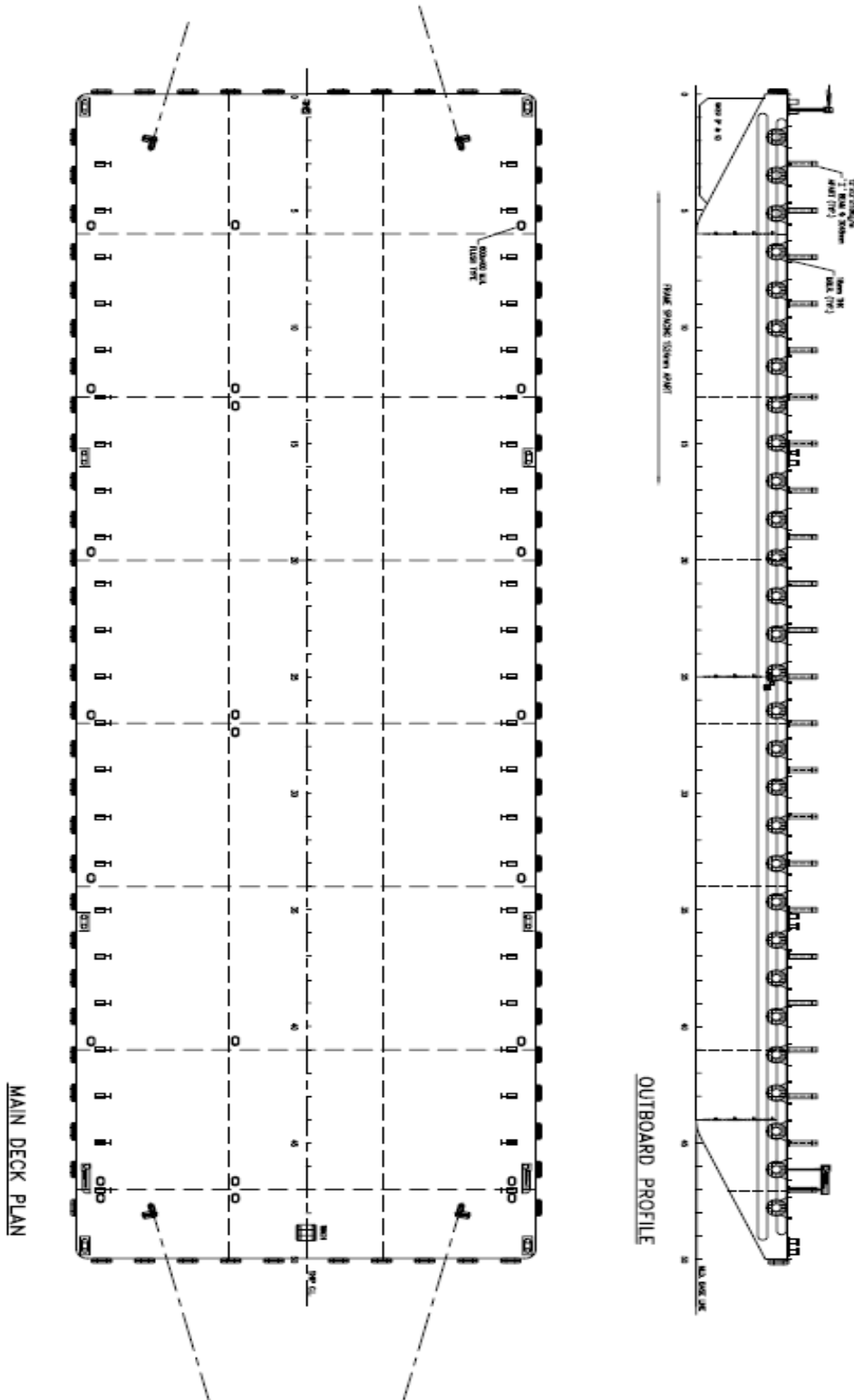


*Particulars are believed to be correct but not guaranteed. All figures given are approximate only. Owners reserve the right to amend the specifications without notification.



ALLIANZ CB 250

250 x 80 x 16 FT FLAT TOP DECK CARGO BARGE



*Particulars are believed to be correct but not guaranteed. All figures given are approximate only. Owners reserve the right to amend the specifications without notification.