



ALLIANZ CB188

180FT X 60FT X 12FT BALLASTABLE BARGE

GENERAL PARTICULARS

Length Overall	180ft (54.8m)
Breadth	60ft (18.3m)
Depth Moulded	12ft (3.6m)
Deck Strength	15 T/m ²
Gross Tonnage	923T
Net Tonnage	277 T
Deadweight	2,098 T (approx.)
Draft	2.928m (max)
	0.625m (unladen)
Classification	DNVGL +100 A5 Barge
Flag	Dominica
Build	2011

MOORING WINCH DETAILS

4 x 20T Hydraulic Mooring Winch fitted with 28mm diameter x 300m (6x36+IWRC) Galvanized Steel Wire Rope with One end fitted with closed spelter socket and other end plain
 1 x 99kW Diesel-driven Hydraulic Power Pack
 4 x 2T Stevshark Anchors
 4 x Deck Mounted Mooring Anchor 28mm Swivel Fairleaders

ANCHOR WINCH DETAILS

1 x Hand operated anchor winch approx. 10 tonnes capacity fitted with 75m x 16mm dia. Anchor galvanised wire rope
 1 x 500kg stockless bower anchor

ADDITIONAL DETAILS

2 W.T Longitudinal bulkheads
 5 W.T transverse bulkheads
 All-Round Handrails
 Flushed manholes marked with identification of each tank
 3 Sets Navigation Light Stand
 Flushed Access Ladder to Deck
 Tyre Fender
 Sacrificial Anodes

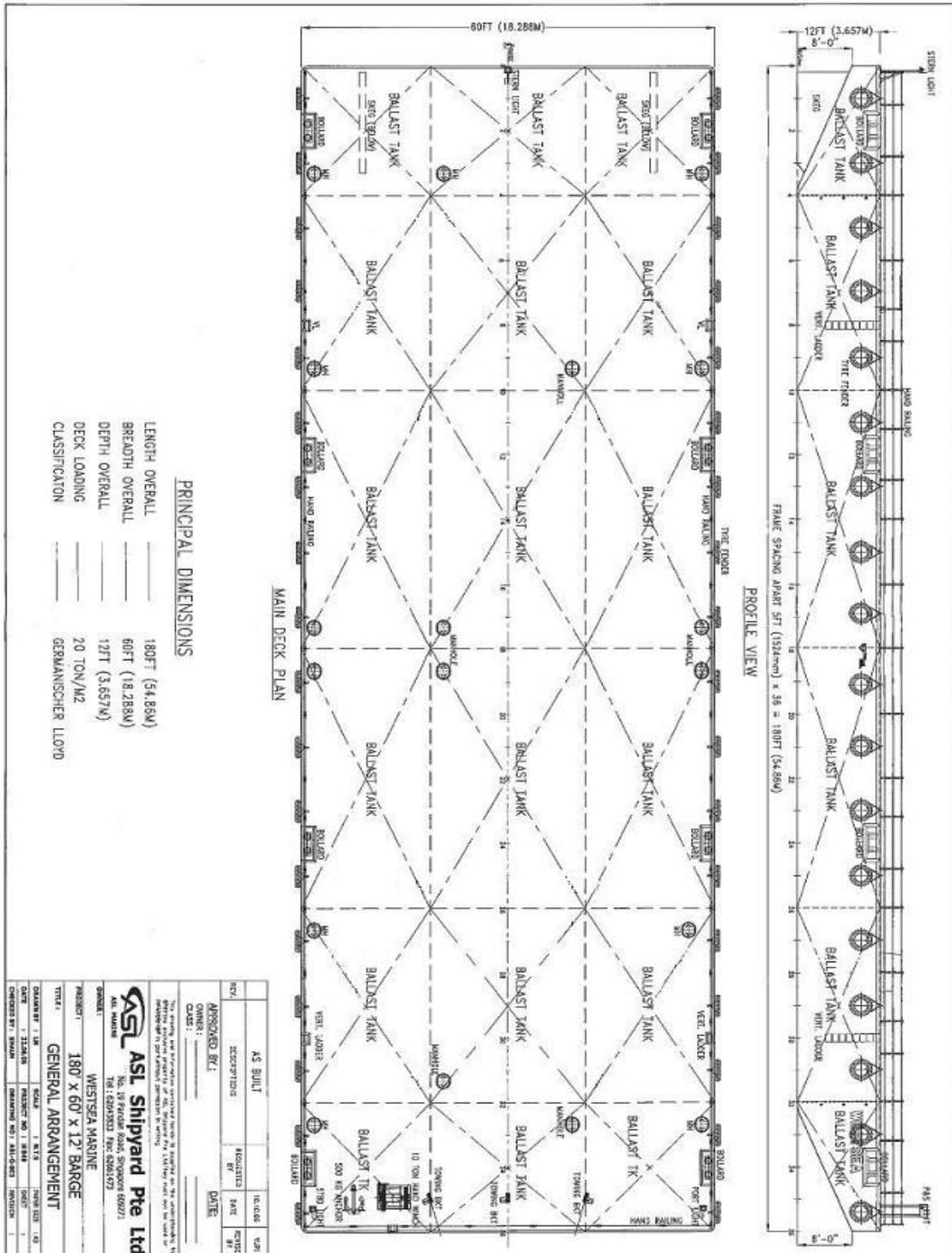
Chain Bridle Assembly

SMIT Brackets (tow connection point)
 Towing Bridle Assembly



ALLIANZ CB188

180FT X 60FT X 12FT BALLASTABLE BARGE



*Particulars are believed to be correct but not guaranteed. All figures given are approximate only. Owners reserve the right to amend the specifications without notification.