



ALLIANZ CB 180

180ft x 60ft x 12ft Ballastable Barge

GENERAL PARTICULARS

Length Overall	180ft (54.86m)
Breadth	60ft (18.29m)
Depth Moulded	12ft (3.66m)
Deck Strength	15T/m ²
Gross Tonnage	923T
Net Tonnage	277T
Deadweight	2,098T
Classification	GL +100 A5 Barge
Flag	Fremantle, Australia
Built	2011

ADDITIONAL DETAILS

All-Round Portable Handrails and Lifelines
 Flushed manholes marked with identification of each tank
 Flush Access Ladder to Deck
 Standard Tyre Fenders
 Emergency Tow-Set up
 3 x Navigation Light Stands and 1 x Colreg Anchor White Light
 Fairleads Bow/Stern

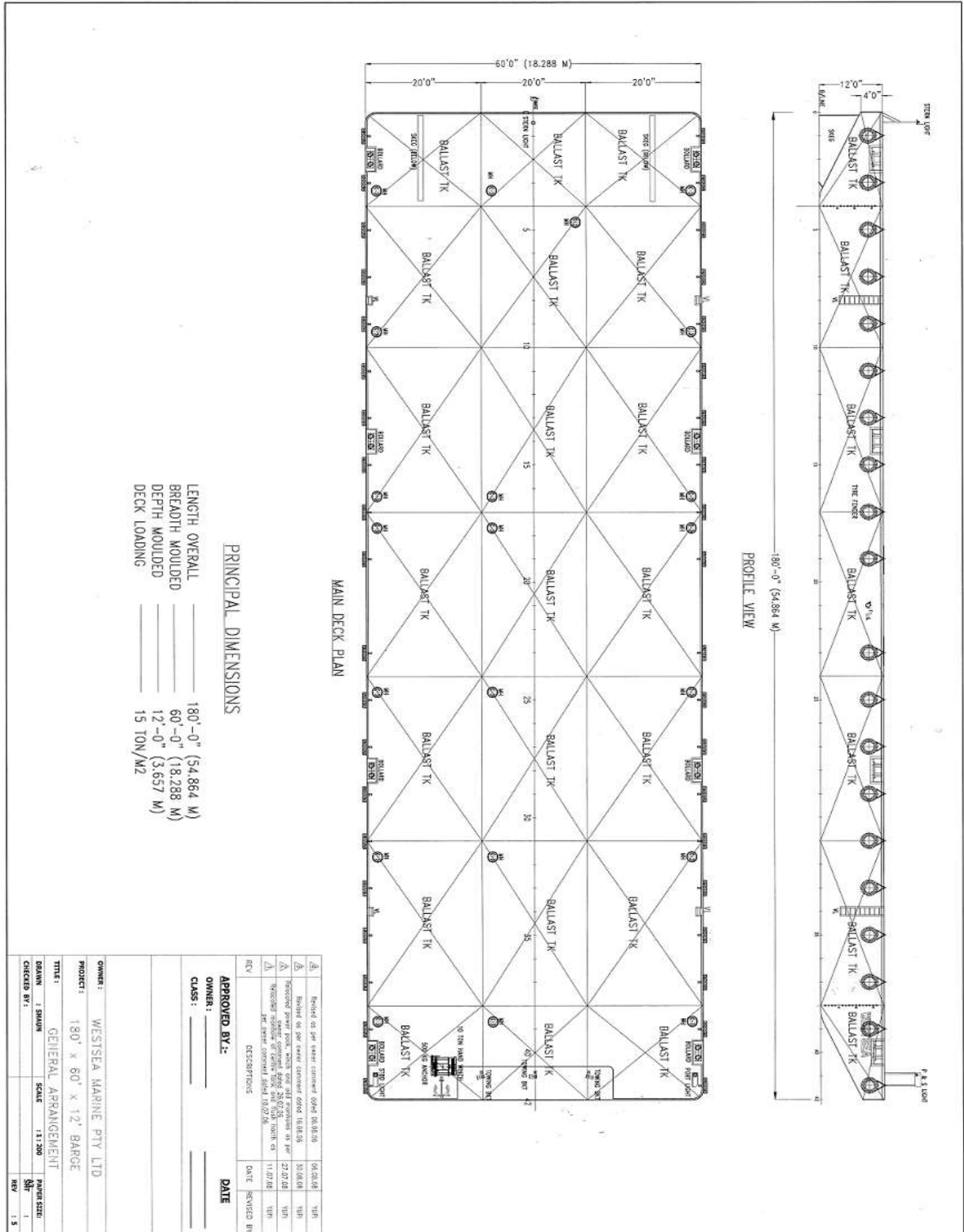
CHAIN BRIDLE ASSEMBLY

SMIT Brackets (tow connection point)
 Fairlead



ALLIANZ CB 180

180ft x 60ft x 12ft Ballastable Barge



*Particulars are believed to be correct but not guaranteed. All figures given are approximate only. Owners reserve the right to amend the specifications without notification.